

WOMONSPACE

our voice in the lesbian community



N
E
W
S

JUNE 1988

Vol. 5

No. 5

Womonspace is a social, recreational and educational organization for the lesbian community of Edmonton and area. We are registered under the Societies Act. Womonspace was formed a number of years ago by a few womyn who saw a need for the lesbian community of Edmonton. Part of the vision of the original founding members was to form an alternative to the gay bars and clubs. Out of this vision evolved our monthly dances, the newsletter and our Thursday night drop-ins. The members of Womonspace have asked for and organized workshops of interest to lesbians; car rallies, ski trips, camping trips and a library geared for us. Womonspace has provided a more creative environment for the womyn to get together and for them to learn to work together and support each other. Every single activity is done by volunteers. The drop-ins are hosted by volunteers and everyone who works at our dances is a volunteer. Our newsletter is completely prepared by volunteers. It's OUR society, OUR organization. It's whatever we want to put into it. It's womyn supporting womyn, taking care of each other and ourselves, creating a better environment for our sisters coming out behind us.

Our address is Basement, 9930 - 106 Street. Our phone number is 425-0511. If you have any questions or comments, please give us a call. We would like to hear from you.

From the Editor's Desk:

There is a new look for the Womonspace newsletter this month, as you can probably see. We have been fortunate enough to acquire the services of a computer and somebody to operate it. All the text was typed into a word processing program, assembled into a desktop publishing program, laser printed and then photocopied and sent out to our members - all done for less cost than traditional typesetting services. We like the new look and we hope you do too.

We really want to make the newsletter an interesting and viable publication, one that womyn enjoy reading. However, to accomplish that objective, we do need your input. If you have anything that you would like to see published (within the realm of good taste), please let us know. That includes poetry, cartoons, book reviews, announcements of forthcoming events - anything you can think of will be seriously considered.

We would like to return to publishing the newsletter on a monthly basis, but we need information to fill it. We would really appreciate your input. Remember everyone, it is **your** newsletter.

Have a great summer!!



The above logo will start to become a familiar sight this summer as Edmonton continues its involvement in Celebration '90.

"All the colour and sparkle of EXPO will return to Vancouver in August, 1990 when approximately 10,000 lesbians and gay men gather for Celebration '90 - a cultural festival and the third international Gay Games."

This was the promise made by spokespersons Betty Baxter and Barry McDell when plans for the world's largest amateur athletic and arts festival were unveiled at a media reception at the B.C. Enterprise Centre last October 23,

1987. Ever since Tom Waddell announced that Vancouver, Canada would be the site of the 1990 Gay Games, there has been tremendous interest and offers of help from all over the world.

THE GAMES' BEGINNINGS

The Gay Games were first held in San Francisco in 1982; they drew over 1300 athletes from 179 cities for competitions in 14 sports. The second Games, again in San Francisco, saw 3,482 women and men from 259 cities participate in 17 sports. Already, letters requesting information suggest that there will be a huge growth by 1990.

CULTURAL FESTIVAL PLANS

Vancouver plans a cultural festival to run parallel to the athletic events. Visual arts, dance, theatre, writing and many forms of music all will be part of the 10-day festival planned for August, 1990. There could be as many cultural participants as athletes as a professional and amateur program develops.

A SPECIAL PHILOSOPHY

The Games are open to everyone who supports their philosophy of inclusiveness rather than exclusiveness. "Participation and doing one's personal best are more important than winning," said founder Tom Waddell. "Our friendly competitions have worked well to remove age, sex and racial stereotypes."

GET YOUR COMMUNITY INVOLVED NOW

Athletic and community lesbian groups all over North America have offered their support through distributing information and through community based fund raisers in support of the Games.

THINGS YOU CAN DO TO HELP

Celebration '90 really welcomes your support. In fact, there are several things you could do today for Gay Games III:

- Sign up as an official 1990 Celebrant! For \$10 a year you add your name to the official mailing list and receive regular newsletters and information updates!
- Tell someone about your woman's sports experiences. Whether it's one person or your whole community, please make sure you help to carry the message about the great experiences gay athletic events offer.
- Inform your artistic friends of the cultural festival.
- Become part of the "Team Edmonton" planning committee.

We hope to report on the continued progress of Gay Games III in our monthly newsletter. If you are interested in getting involved in any way whatsoever, please contact Kim (a male Kim) at 434-4906, or Ann at 431-0336.

WE CAN MAKE CELEBRATION '90 AN EVENT OF WHICH THE WORLD GAY COMMUNITY CAN BE PROUD!!!





INSIGHT COMES TO EDMONTON

This autumn will mark a new event on Edmonton's cultural calendar:

INSIGHT, Edmonton's First Women's Film and Video Festival.

The Edmonton Women's Film and Video Collective, with the joint sponsorship of the Women's Program, Faculty of Extension, University of Alberta and the National Film Board of Canada, are proud to unveil **INSIGHT**. This three-day event will showcase films and videos made by womyn concerning womyn. Works by Albertan, Canadian and international womyn directors will be featured.

The Festival will offer the public a chance to participate in workshops on and discussions of womyn's filmmaking, which will be hosted by local and international artists and critics.

Edmonton's first Women's Film and Video Festival will be held on October 28, 29 and 30 in the Tory Lecture Theatre Building at the University of Alberta.

INSIGHT invites film and video submissions from local womyn filmmakers and welcomes volunteer assistance. To find out how you can contribute to **INSIGHT**, Edmonton's First Women's Film and Video Festival, please contact any one of the following resource persons:

Catherine Bray
(Womens' Program Director)
432-3093

Bonnie Thompson
(Programming and Submissions)
420-3018 (NFB)

Betty Schelske (Volunteer Co-ordinator)
435-6826

Dale Taylor (Publicity)
482-7942

or write:

INSIGHT,
Women's Film and Video Festival
c/o Catherine Bray, Director
Women's Program and Resource Centre
11019 - 90 Avenue
EDMONTON, Alberta
T6G 2E1

MEMBERSHIP RENEWALS

Are you wondering when your membership is up for renewal? Wonder no more!! See your new address label for your newsletter? The month and year indicates your anniversary date.

The task of sending out individual renewals becomes an overwhelming job for the concerned individual doing it. We would really appreciate it if you, the member, would take the responsibility of submitting your renewal to the membership director. Clip out the form below and send it in with your renewal fee. Your co-operation would be greatly appreciated. Thank-you.

MEMBERSHIP NUMBER _____

NAME _____

ADDRESS _____

POSTAL CODE _____ TELEPHONE: _____

RENEWAL DATE _____

THANKS FOR YOUR SUPPORT!!

DOES YOUR GROUP NEED SOME HELP FUND RAISING?**MAYBE WE CAN HELP.**

As of the December '87 General Meeting, the membership of Womonspace chose to open up some of our dances for co-sponsoring to assist fund raising efforts by various womyn and/or gay groups in the area. Through a bit of reorganization, we have reduced the necessary number of volunteers needed to run a dance to a minimum. This makes it possible for groups with a small number of womyn to co-sponsor an evening and earn some funds for their group. We will have two coordinators to help organize you, and have the basic task descriptions for the volunteers. Your group will receive 30% of the profits. However, it is necessary to fill out an application or submit a formal letter of intent with regard to the above. For more information, or to obtain an application form, please call our phone line at 425-0511, write to us at Basement, 9930 - 106 Street, or attend our General Meeting held the second Tuesday of every month.

Shelley

Notice

THE FLOOR has been opened for nominations for President of Womonspace. If anyone is interested, please attend the next general meeting (Tuesday, July 10, 1988).

WOMONSPACE is holding a picnic at Emily Murphy Park (across the road from Hawrelak Park), on July 17, 1988, from 1:00 p.m. on. All lesbian womyn and children are welcome. It will be a great time - we dare you to "come out and have some fun". Just bring your own food and drinks. There will be games for all and, better yet, prizes - all donated by Womonspace. You do not have to be a member - just come out and enjoy the fun. Hope to see you there!!

P.S. If it rains, the picnic will be cancelled.

GALA 88 (GAY AND LESBIAN AWARENESS)

It's that time of year again, so pencil the following dates in your calendar:

TUESDAY, JUNE 21

Wine and Cheese, Gay and Lesbian Community Centre, 7-10 P.M., #104, 10173 - 104 Street.

WEDNESDAY, JUNE 22

Common Woman Books - Radical Book Sellers, 7-10 P.M.

Annual drop-in, book sale, wine and cheese, 8724 - 109 Street, 432-9344.

THURSDAY, JUNE 23

Womonspace Wine and Cheese, 9930 - 106 Street, Lower Floor, 7 P.M.

FRIDAY, JUNE 24

Coffee House, Unitarian Church, 12530 - 110 Avenue, 8 P.M.

Advance tickets advised - available at GLCC (Gay and Lesbian Community Centre), 424-8361.

Featuring Matt Gould and Karen Howe.

Gay AA Drop-in, 7 P.M., Unitarian Church

SATURDAY, JUNE 25

Annual Gala Dance, Bonnie Doon Community Centre, 9240 - 93 Street, 8 P.M.

Advance tickets advised - available at GLCC, 424-8361.

SUNDAY, JUNE 26

Annual Gala Potluck Picnic, Picnic Site #1, Rundle Park, 12 noon to whenever. Bring your own food and friends - this event gets bigger and better every year.

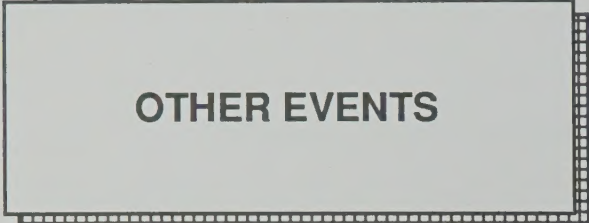
Ecumenical service at 1 P.M.

Croquet game, Northern Chaps vs. Guys in Disguise (some time, whenever the Queen of Hearts arrives).

MONDAY, JUNE 27

Public Forum, 7 P.M., Lecture Theatre L1, Humanities Building, Saskatchewan Drive, University of Alberta.

HOPE TO SEE YOU THERE!!



OTHER EVENTS

POT LUCK SUPPER FOR LESBIANS

In case you haven't seen the poster, somebody has come up with a great idea for lesbians to meet other lesbians, enjoy each others' company and make new friends, without going to the dances and bars. There is going to be a pot luck supper for lesbians on Friday, July 1, at 7:30 P.M., at the Unitarian Church, 12530 - 110 Street. If you would like more information, you can give Common Woman Books a call, at 432-9344.



NEXUS THEATRE and ACTORS ALIVE are proud to present:

GERTRUDE STEIN AND A COMPANION by Win Wells, August 29 to September 10.

Starring: Julie Bond and Gayle Murphy.
Set Design: Adele Frizzell.

Special Gala '88 Discount Booking: With a reservation of eight or more tickets, it is only \$5.00 a person.

68 McCauley Plaza, Phone 429-3625.

REMEMBER: Nexus Theatres' season passes are only \$24.95 for five plays.



REGULAR EVENTS

GENERAL MEETING

The General Meetings are held on the second Tuesday of every month at the Women's Building (Basement, 9930 - 106 Street), at 7:30 P.M. Both members and non-members are welcome to attend.

Our next meeting is **Tuesday, July 10, 1988.**

DANCE COMMITTEE MEETING

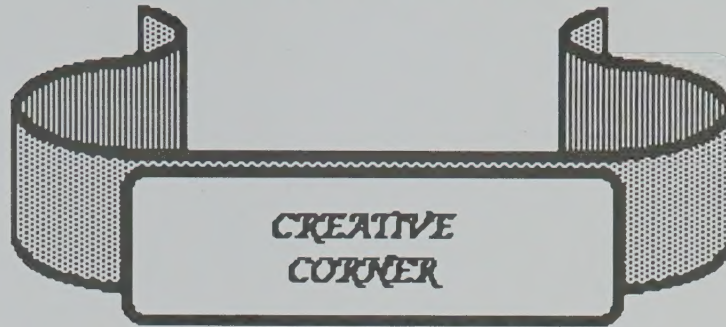
If you are interested in getting involved in the planning and running of our monthly dances, then please attend our meetings held on the last Thursday of the month at 7:30 P.M. at the Women's Building (Basement, 9930 - 106 Street).

Our next meeting is **Thursday, July 27, 1988.**

NEWSLETTER MEETING

There is no newsletter meeting set up at the moment, however, if you are interested in getting involved in any of the various areas (writing, editing, collation, production, distribution, etc.), please call the Womonspace Office at 425-0511.

WOMONSPACE NEWS is published monthly by Womonspace Social, Recreational and Educational Society of Edmonton. Womonspace is a non-profit organization for lesbians in Edmonton and surrounding areas.



GRIEF

My lover sleeps .
hands curled under chin,
warding off the evil invader,
the ruthless, silent killer with a thousand
tendrils,
weaseling its way in ...
She has said she'll win
this fight: she is, after all, a survivor.

My lover moans
as she does at happier moments
but these awful groans are pure terror:
it isn't death she fears, it's the goddamn
pain,
the relentless progress, the inevitability of
it all.
But she says she has always been a fighter
...
Dare I hope she won't fight in vain?

My lover winces
and, this is the heart-wrenching part,
It cracks my heart wide open,
waves of empathy going out to her.
I can do nothing but hold her gently.
She has said she can take it, she's tough,
But, Oh Goddess, is toughness enough?

My Lover wakes ...
lips smiling, body demanding love
with an urgency, a wildness, bittersweet
and
when we are spent, quieted, at peace
it becomes possible to believe that the
enemy can be beaten.
or, better, that this has been a nightmare
from which we have just awakened.

Toni M.-
- for Shirley

December 7, 1987

ONE LAST RIDE ON THE MIND- BENDER

There are many possible answers, my
womon
yet only one question.

We held each other "for the last time",
but you didn't leave

You cried and I cried, but we didn't grieve.

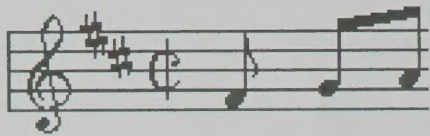
It was only when I thought you would
live in my mind forever,
saying: "I'm going, I'm going,"
that you left ...

There are many possible answers, my
nechimos,
and none seems to apply because
There is only one question:
Why?

Goodbye.

Toni Mercer
- in memory of
Shirley Arcand who
died March 25,
1988.





WOMONSPACE DANCE JULY 16, 1988

BONNIE DOON HALL
9240 - 93 STREET
8:30 p.m. to 1:30 a.m.

ADMISSION: MEMBERS \$6.00, NON-MEMBERS \$7.00

CREDITS

PLEASE NOTE:

Articles published in Womonspace News do not necessarily reflect the policies and opinions of Womonspace.

Contributions by: Toni M., Shelley I. and N.C.

Typing: N.C. and Shelley I.

Layout: N.C.

Production: N.C.

Collating and Distribution: N.C. and Gail S.

WOMONSPACE NEWS
Basement, 9930 - 106 Street
Edmonton, Alberta
425-0511